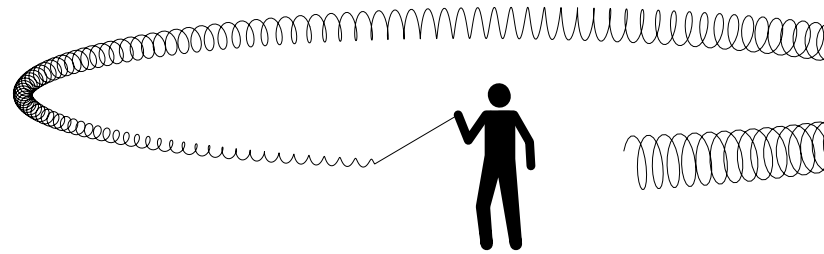
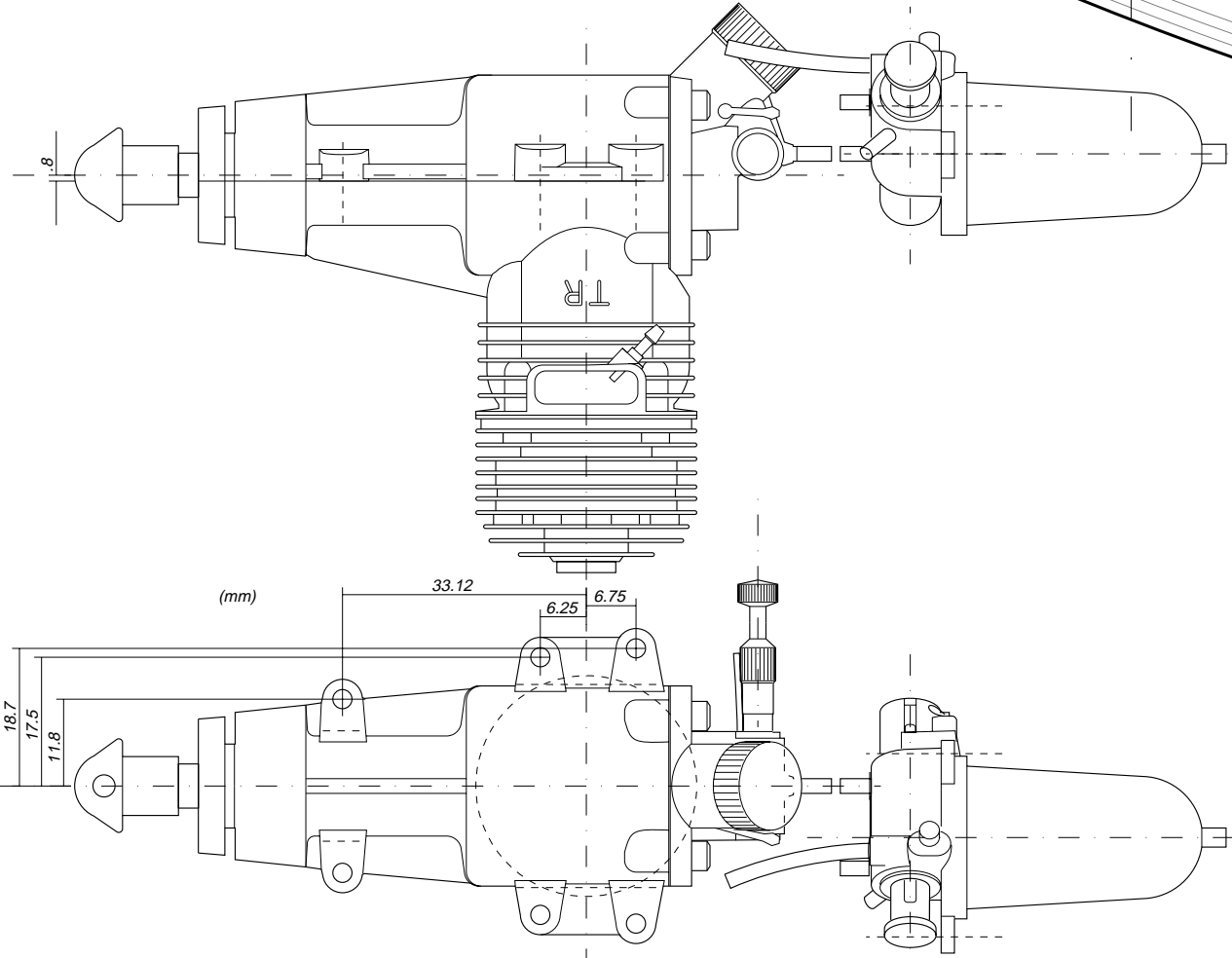


*FAI F2C Control Line Team Ra  
Göran Olsson, Stockholm, SW*



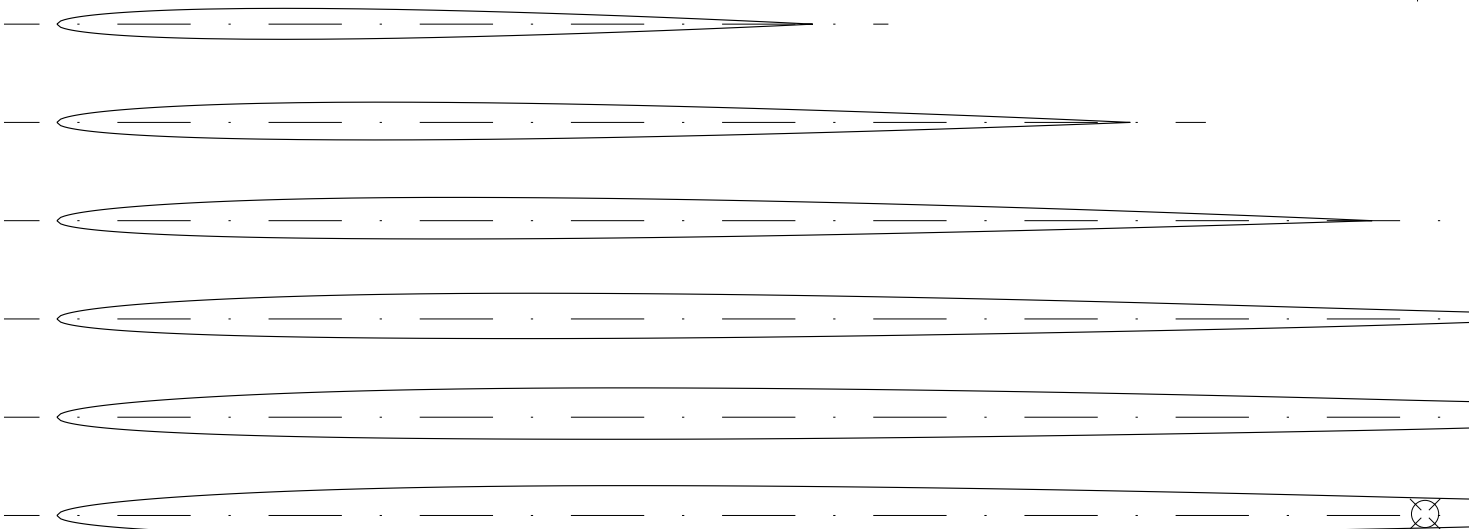
**MICMIXC**

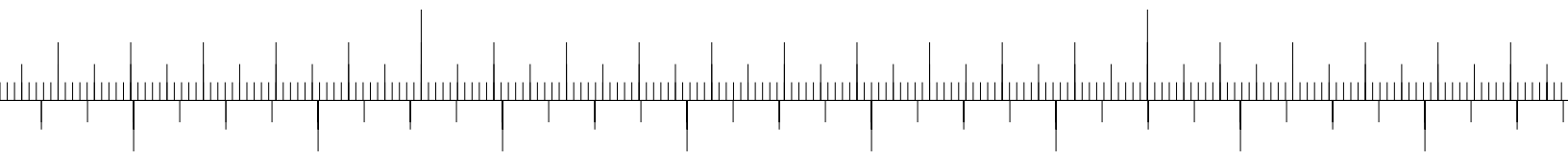
*Engine: JM 15 TR 2.48 cc*  
*Tank & Filler Valve: JM 6.85 cc*



*Designed by Yakov Mazniak, Kharkov, Ukraine*

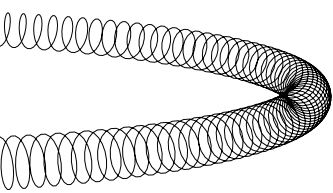
*Wing Sections*





*n Racer 1999*  
**SWEDEN**

*Prop*  
*diam*

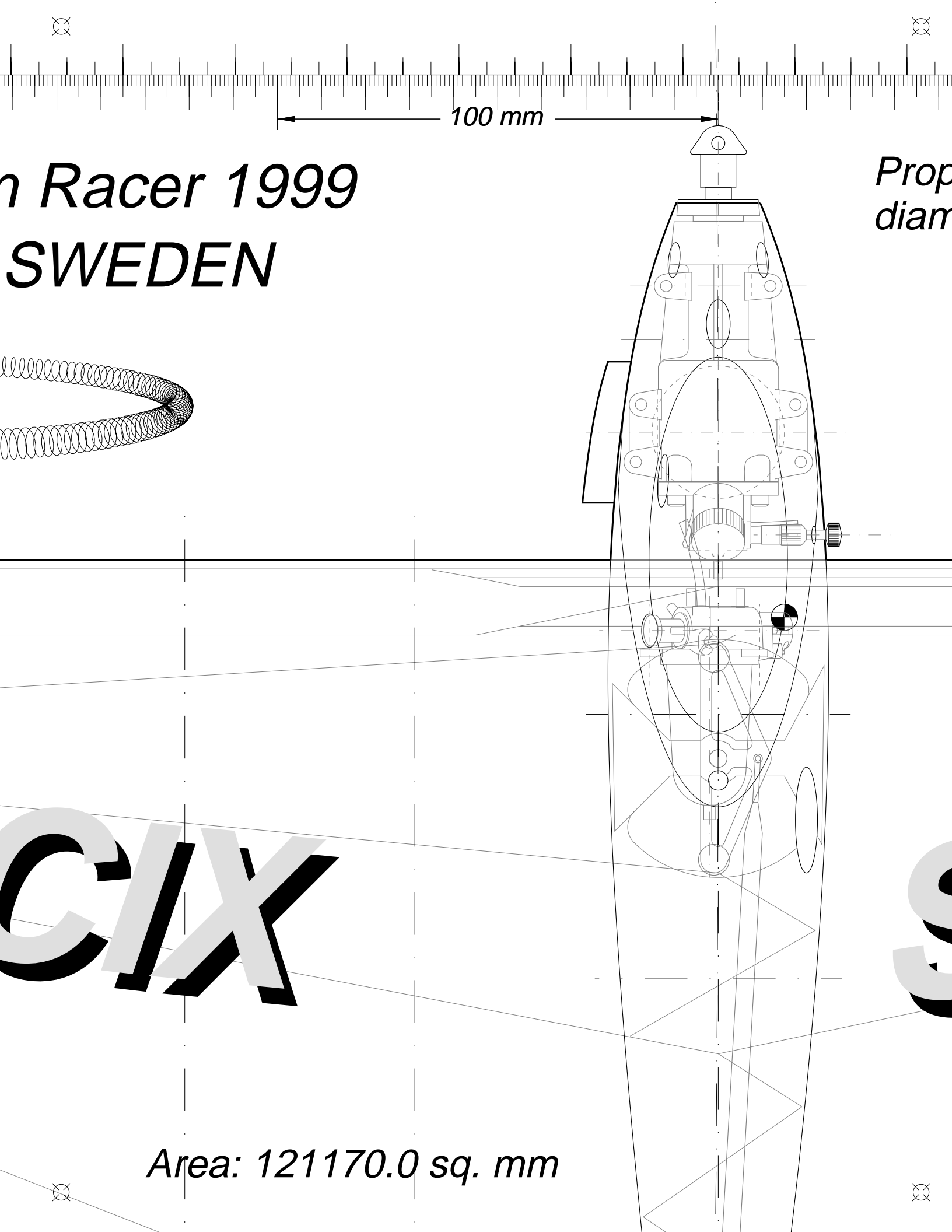


100 mm

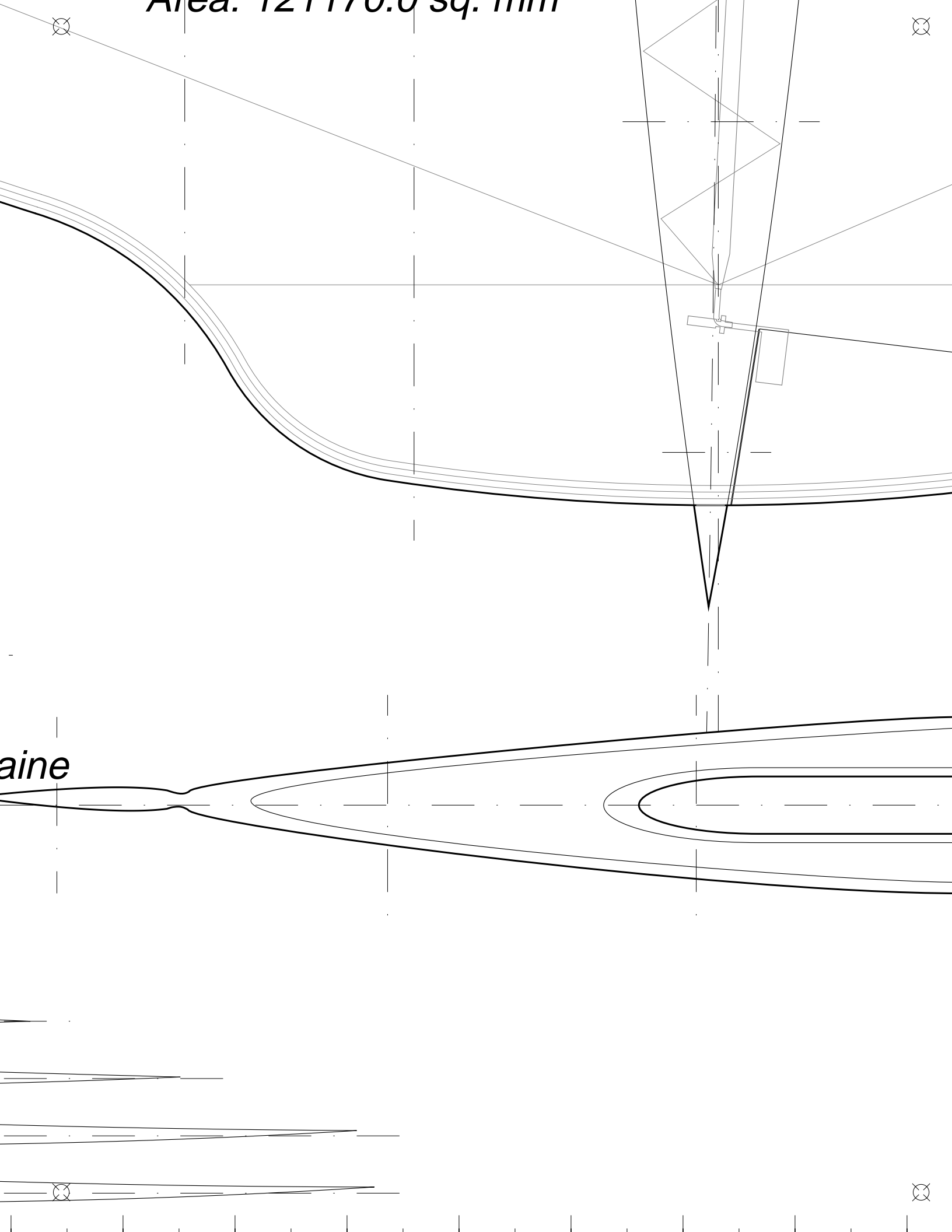
**CIX**

**S**

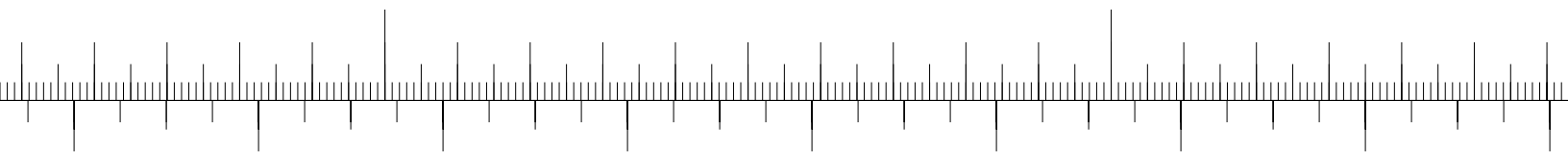
Area: 121170.0 sq. mm

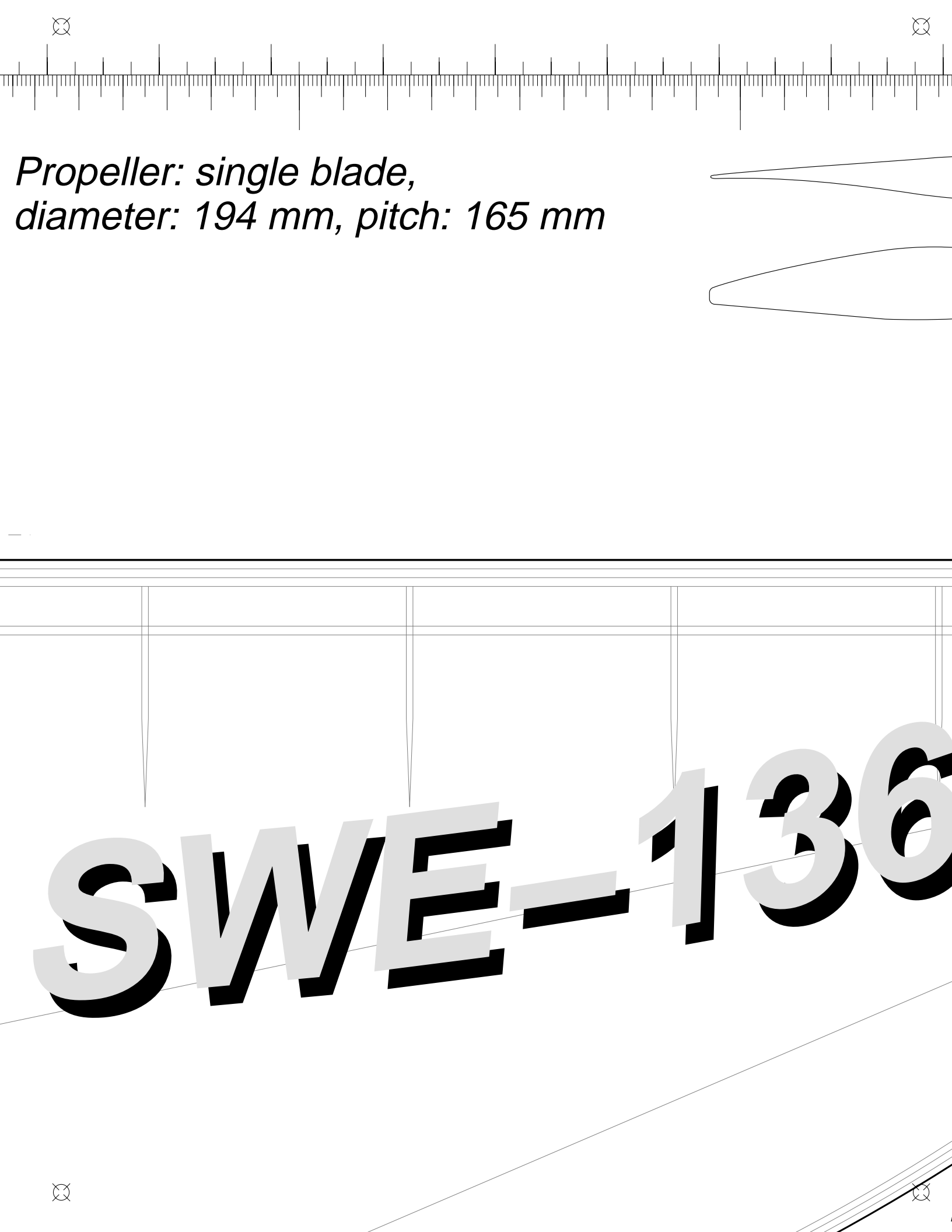


*Area. 121170.0 sq. mm*

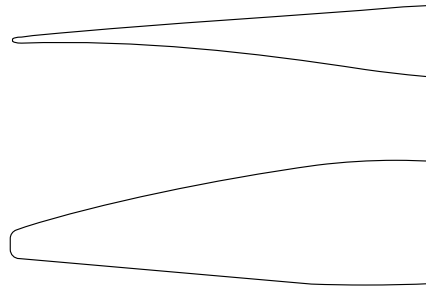


*aine*

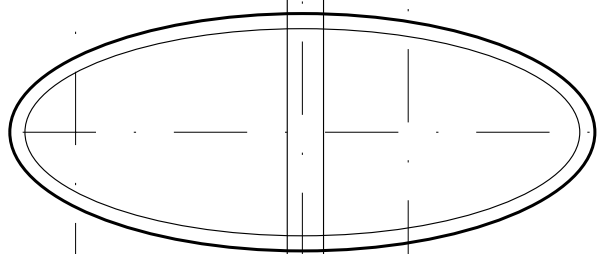
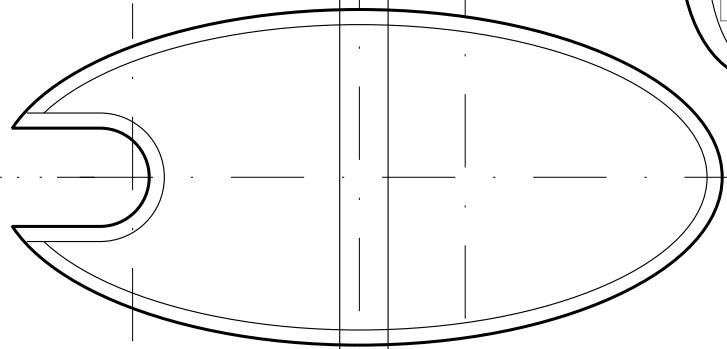
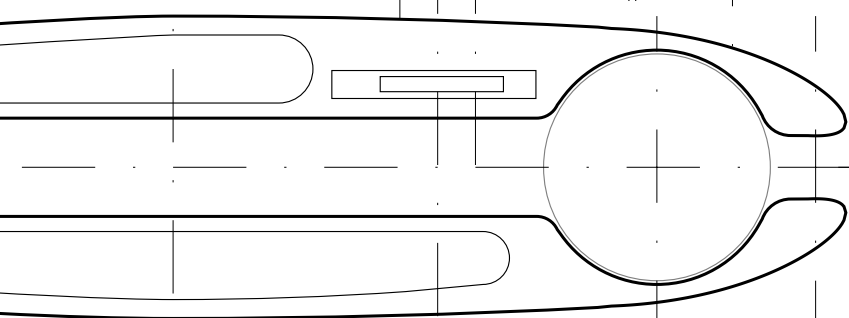
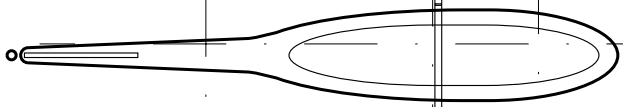
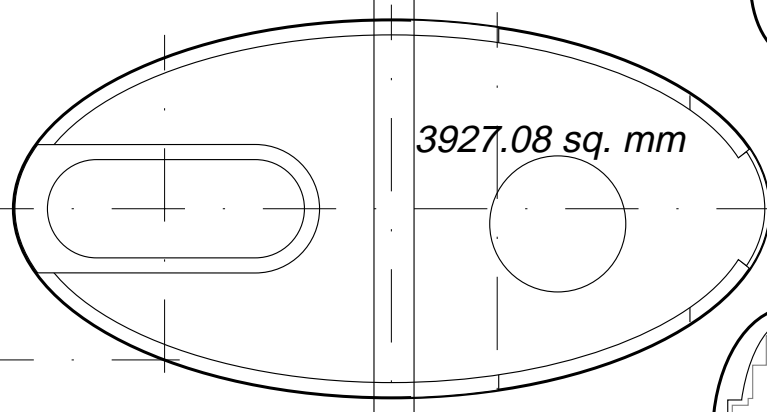
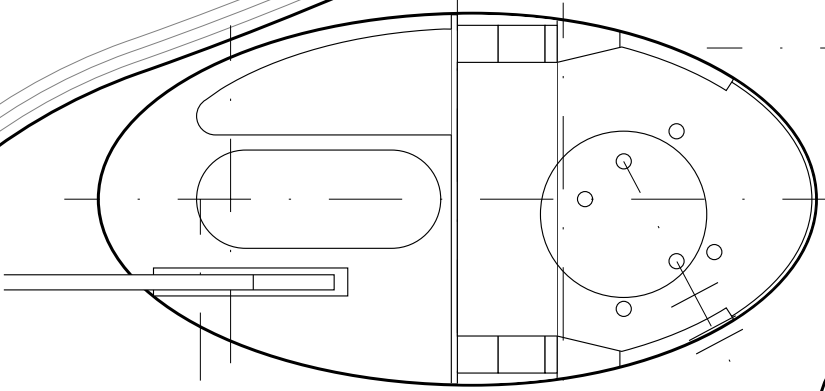
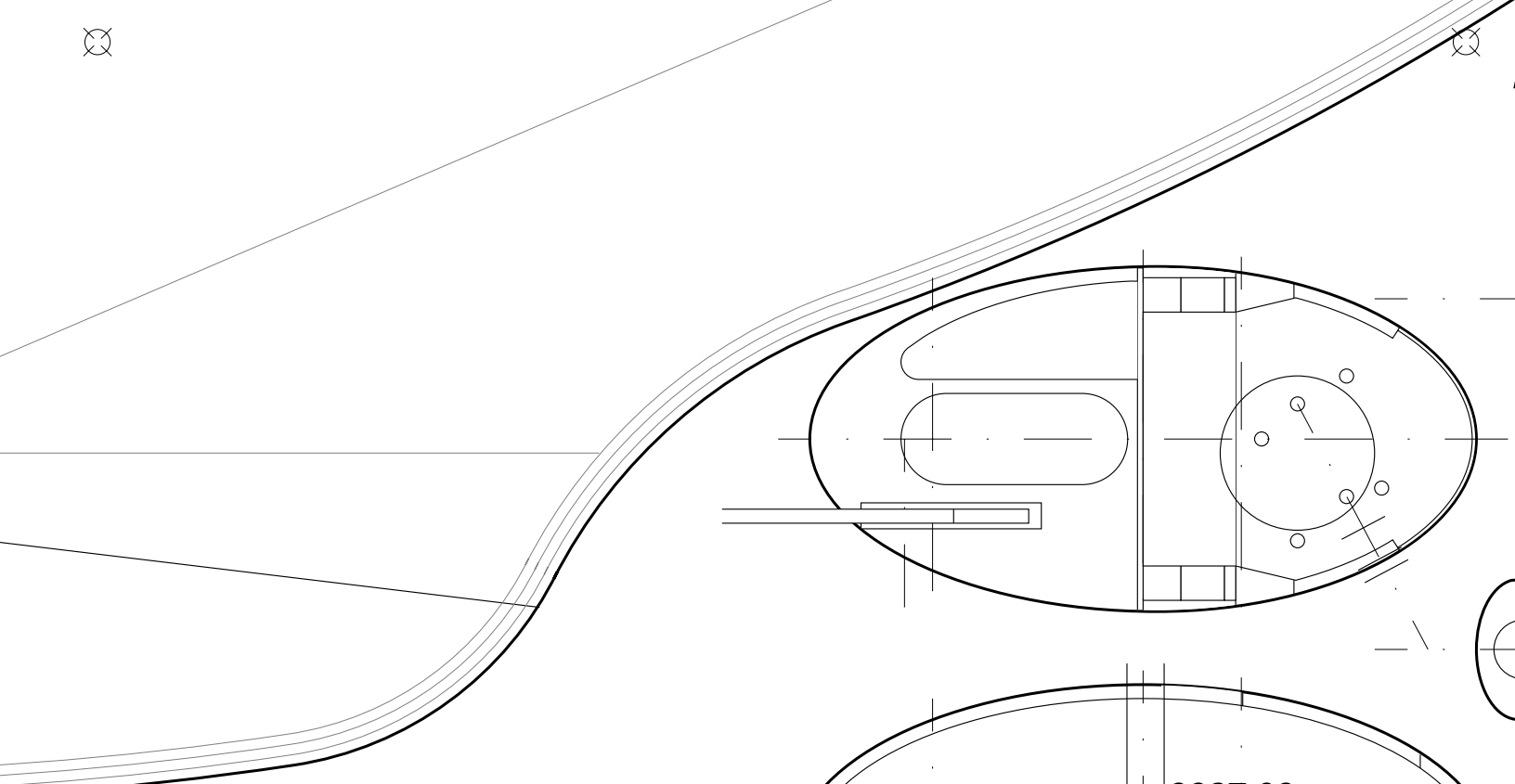




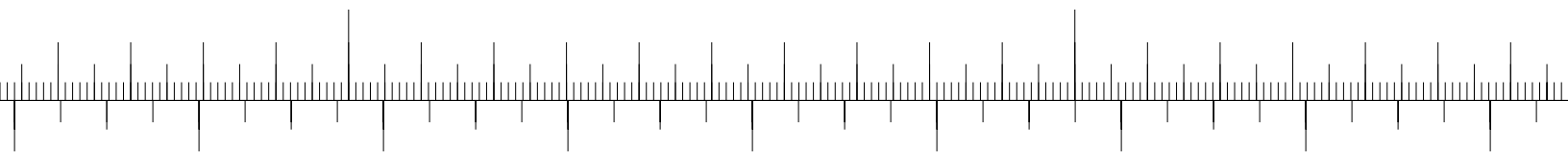
*Propeller: single blade,  
diameter: 194 mm, pitch: 165 mm*

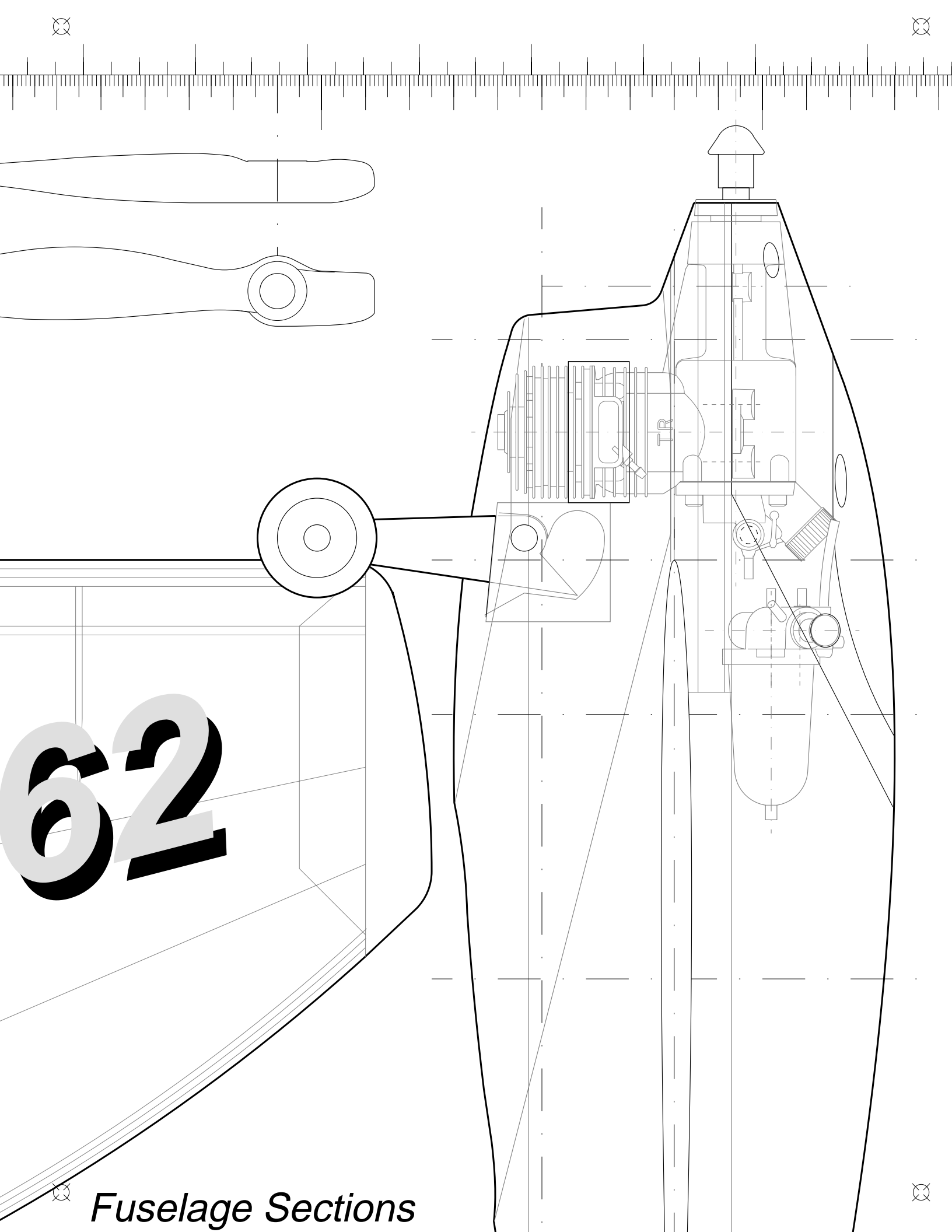


**SWE-136**





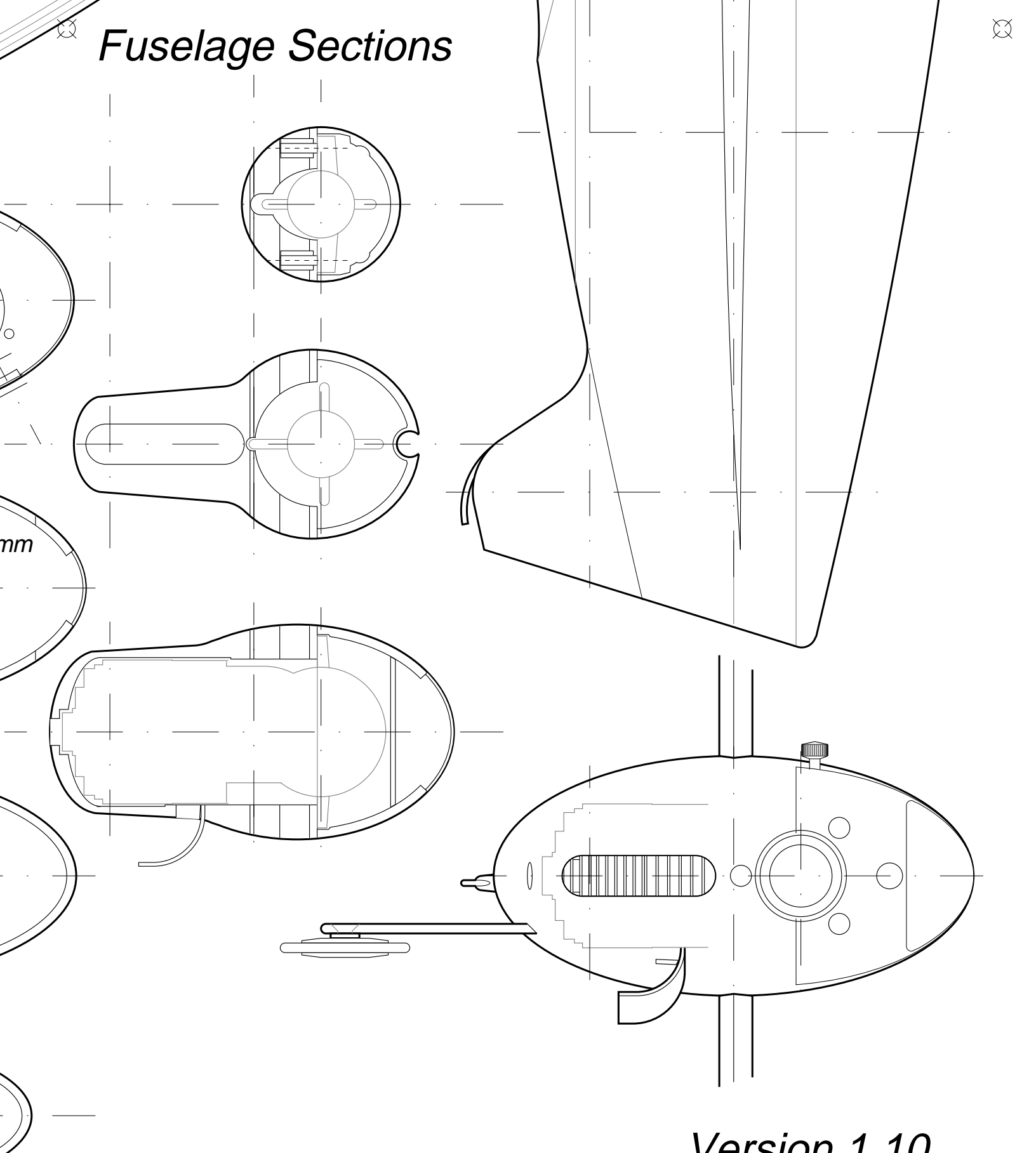




62

*Fuselage Sections*

# *Fuselage Sections*



*Version 1.10*

*Greetings from [olsson@plasma.kth.se](mailto:olsson@plasma.kth.se)*

